

Southern Watercolor Society

www.southernwatercolorssociety.org



October 2011

CALENDAR



SW 35th EXHIBITION & WORKSHOP

June 9–July 7, 2012

Sautee Nacoochee Center
Jim Thomas, Gallery Director
Sautee Nacoochee, Georgia
www.snca.org

Events

June 9, 2012

12 Rivers Art Festival &
SW Watercolor Demo

June 10, 2012

SW Members Meeting &
35th Opening Reception

Workshop

June 11–15, 2012

Juror/Workshop Instructor

Frederick Graff
AWS, NWS, TWSA

<http://www.fredgraff.com/>

Southern Watercolor's
35th Prospectus
for the 2012 Exhibition
will be mailed in
mid-January.

Remember that to enter
the 35th you must be a
2012 member
of the Southern
Watercolor Society.

Dues are to be paid on
or before **January 1st**
of each year.

New members must reside
in one of the states listed in
the **Membership Form** on
page 8
of this newsletter.

Destination Georgia

Plans for our 35th Exhibition had begun even before the opening of this year's 34th Exhibition in Greenville, North Carolina. How fortunate it is for Southern Watercolor Society to be invited to hold our yearly exhibition and workshop for 2012 in yet another outstanding location, the mountains of Northeast Georgia.

Below and on the following page are descriptions and photos of the Sautee Nacoochee Center and surrounding areas, sent to us by Jim Thomas, SWCA Gallery Director and 35th Exhibition Co-Chair. Excellent information for you to read while you are planning your next art adventure in June of 2012.

On the same day as our show opening, the 12 Rivers Art Festival will take place at the Center, and that weekend in June will be the Northeast Georgia Arts (self-guided) Tour. Then the SW Workshop with instructor Frederick Graff will begin right after this exciting art weekend! (See page 7.)

Don't miss any of it!



ART

You will enjoy a large selection of the finest art work available from artists living and working within a 50-mile radius of the Center. Everything from \$5 pottery mugs to a \$10,000 hand carved fireplace mantel has graced the twin galleries. Seven themed art exhibits are held annually featuring individual artists or a medium group of artists.

Whether the piece you are seeking is a painting, metalwork, jewelry, fiber art, fused glass, wood turned art or folk art, you'll find a wide selection here.

THEATRE AND MUSIC

Internationally recognized singer-song writers, local bands, theatre, slam poets, hard rockers, late night cabaret, touring choirs and more have appeared on the Center's stages. Activity reaches a peak in June with Summer-Fest, a six week celebration of the arts that the Southern Tourism Society has named one of the Top 20 Events in the Southeast.

FOLK POTTERY

The Sautee Nacoochee Center is home to the Folk Pottery Museum of Northeast Georgia. It is one of a handful of internationally recognized museums that focuses exclusively on folk pottery, which was an integral part of the life and the industry in this part of the South before the evolution of factory-produced



Continued on page 2.



The Sautee Nacoochee Center is home to some of the best music, theatre, shopping, history and art in Northeast Georgia.

SNCA is:

- "One of the 100 best small art towns" per John Villani's 100 Best Small Art Towns in America.
- A "Best Travel Tip" in Southern Living, 2008.
- "One of the best music destinations in Georgia" told by the Georgia Music Hall of Fame.
- "So unique that superlatives don't do it justice" from Fodor's Choice, 2009.

~

DESTINATION GEORGIA

**OFFICERS/BOARD
2010–2011****PRESIDENT****Geri Davis**

9242 Comanche Rd
Columbus GA 31904
gerimdavis@mchsi.com
1-706-327-5829

VICE-PRESIDENT**Vacant****TREASURER****Jean Weiner**

1000 3rd Ave SW
Le Mars IA 51031
jean@jeanweinerart.com
1-229-344-1947

MEMBERSHIP CHAIR**Linda Pelc**

4330 Camden Rd
Tallahassee FL 32303
lindapelc@yahoo.com
1-850-536-1942

NEWSLETTER EDITOR**and SECRETARY****Ann Kromhout**

319 Westbrook Drive
Carrboro NC 27510
ann@kromhout.us
1-919-967-1937

WEB MASTER**Don Taylor**

3416 W Hwy 390
Panama City FL 32405
dtaylor215@gmail.com
1-850-215-9424

WEB DESIGNER**Dale Cochran**

101 Timbrooke Way
Easley SC 29642
KCOCHRA@clermson.edu
1-864-275-5976

35th EXHIBITION CHAIR**Jim Thomas**

jthomas@snca.org
1-706-878-3300

**Next Deadline for
News and Photos:****January 1, 2012**

Newsletter Photos can be sent as [prints](#), [slides](#) or by [email](#) in a [medium](#) .JPG format. If you want your printed photos returned, please send an SASE along with your items.

Ann Kromhout
SW Newsletter Editor
319 Westbrook Dr.
Carrboro NC 27510
1-919-967-1937
ann@kromhout.us

Oct. 20, 2011.



glass and ceramic containers. This glass walled addition to the Center, a modern interpretation of a folk potter's shed, has won multiple awards for excellence in design and showcases a collection tracing 200 years of our region's folk pottery history.

HISTORY

The Center offers many opportunities for those who like to immerse themselves in the history of an area. Start your visit in the local history museum and you'll learn about the Native Americans who once lived here, the early settlers, vintage weapons and tools, and the area's role in a gold rush. When you

finish in the museum, take a tour of the Sautee Nacoochee Slave Cabin. Situated in the heart of the SNCA campus, this structure is one of the only restored slave dwellings known to exist in northeast Georgia. The Slave Cabin documents and interprets the little known history of slavery in North Georgia. Seasonal Folk Life Festivals feature artisans demonstrating historic crafts and skills.

DANCE

Wildly popular Contra Dances are held monthly at the Center. Contra dancing (the term is derived from "country dancing") is a group-based dance that has a long tradition. It is similar to square dancing and the Virginia Reel, usually done in circles or lines, with a few basic dance figures that are combined in various ways prompted by a caller.

EDUCATION

Bring out the artist in you by joining us for an art workshop, a dance class, or an artist demonstration. A variety of classes in the visual and performing arts are offered regularly for adults and children in our art studio and dance studio.

DIRECTIONS

You can find your way to the Sautee Nacoochee Center by following information on Google Maps or by going to the Center's website: www.snca.org. A phone call to the Center at 706-878-3300 will answer any questions you may have.

12 RIVERS ART FESTIVAL

The third annual one-day 12 Rivers Art Festival will take place on the shaded grounds of the Sautee Nacoochee Center on June 9, 2012. This event features approximately 100 juried artists from the Southeast. In addition to the artists' booths, there will be various types of art and fine craft demonstrations. Locally crafted beers and wines as well as area foods will be available for purchase. →

**SAUTEE JAMBOREE AND HEADWATERS**

The Sautee Nacoochee Center is known for its Sautee Jamboree, a two-night outdoor music event which features about a dozen popular musical bands or groups. The Center also has been drawing sellout crowds for its Headwaters extravaganza. This production-in-the-round is held in our historic gymnasium and usually runs for two or three weekends from Thursday evening through Sunday matinee. Check the website, www.snca.org, for dates and ticket information.

**STOVALL MILL COVERED BRIDGE**

Built in 1895, this covered bridge at 36.8 feet in length, is one of the shortest and one of the oldest in Georgia. It is the last remaining covered bridge in White County. Located on the Chickamauga Creek, the bridge appeared in the 1950s movie "I'd Climb the Highest Mountain" starring Susan Hayward. It is located about three miles from the Center.

Continued...

DESTINATION GEORGIA



LOCAL SIGHTS

The Sautee-Nacoochee Indian Mound, located about four miles from the Center, is a must-see sight. An Italianate gazebo built in the 1800s is perched atop an Indian mound which Indians constructed in 10,000 B.C.



OLD SAUTEE STORE

This 135 year old store is located about one-quarter mile from the Sautee Nacoochee Center. Still open and currently a store and museum, it is one of the most popular points of interest in the Northeast Georgia mountains. →

NORA MILL GRANARY & COUNTRY STORE

Constructed in 1876, this is a large four-story building located along side the Chattahoochee River. It contains an operational gristmill that stone grinds and produces all kinds of corn and wheat products on a daily basis.

OTHER POINTS OF INTEREST that are within a half-hour drive from the Sautee Nacoochee Center: • Unicoi State Park • Smithgall Woods State Park • Alpine Helen • Tallulah Gorge State Park • Amicalola Falls State Park • Babyland General Hospital, home of the Cabbage Patch Kids • Various Vineyards and Wineries.

NORTHEAST GEORGIA ARTS TOUR

During the June 8-9-10, 2012 weekend four counties will be hosting the Northeast Georgia Arts Tour. Art studios, shops, stores, B&Bs, and other related businesses will be open to the public with most of them featuring artists demonstrating their art skills. Counties included in the Arts Tour are White, Habersham, Lumpkin and Rabun. Maps will be available for you to route your self guided tour. ~

STATE REPRESENTATIVES

- Alabama:** Dick Millman, 736 Brenda Ave, Auburn AL 36830 • millmmm@charter.net 1-334-887-6428
- Arkansas:** Cynthia Schanink, 5 San Mateo Pl, Hot Springs AR 71909 • cschanink@yahoo.com 1-501-922-1909
- Delaware:** (Vacant)
- District of Columbia:** Maria Morga, 4825 43rd Street NW, Washington DC 20016. • morga@mmorga.com 1-202-728-0430
- Florida:** Val Wright, 200 L'Ambiance Cir Apt 104, Naples FL 34108. • val@valwright.com 1-239-513-1082
- Georgia:** Mary Britten Lynch, 1505 Wood Nymph Trail, Lookout Mountain GA 30750 • mbritlynart@comcast.net 1-706-820-9078
- Kansas:** Marilyn York, 16024 W. 147th Terrace, Olathe KS 66062 • rayork@prodigy.net 1-913-782-2517
- Kentucky:** Elise Beattie, PO Box 7829, Paducah KY 42002 . 1-270-415-9141. • artist@embart.com
- Louisiana:** Kathy Miller Stone, 9246 Essex Bay Rd, Baton Rouge LA 70809. 1-225-293-4612 • kathymillerstone@yahoo.com
- Maryland:** William (Skip) Lawrence, 5000 Old Bartholows Rd., Mt. Airy MD 21771. 1-301-865-5497
- Mississippi:** Eleanor Hughes, 5492 River Thames Rd, Jackson MS 39211, 1-601-956-6401 • grahamhughes@att.net
- Missouri:** Marilynne Bradley, 817 S Gore Ave, Webster Groves, MO 63119. • mgbrad@aol.com 1-314-968-1439
- North Carolina:** Charles Sharpe, 4617 Reigal Wood Rd, Durham NC 27712 • csharpetts@aol.com 1-919-477-1360
- Oklahoma:** Arni Anderson, 3916 Jim Robison Dr, Edmond, OK 73013. • arni1@yahoo.com 1-405-202-7799
- South Carolina:** Elaine Stone Wagner, 696 Perrin Dr, Spartanburg SC 29307. 1-864-579-2693 • eswsc@bellsouth.net
- Tennessee:** Victoria Lenne, 7808 Mare Haven Rd, Knoxville TN 37920 • digitaley@comcast.net 1-865-579-0136.
- Texas:** Marsha Harris, 5832 Valley Forge Dr, Houston TX 77057. 1-713-266-9173 • marshasolomon@comcast.net
- Virginia:** Catherine Hillis, PO BX 41, Round Hill VA 20141. • chhillis@aol.com 1-703-431-6877
- West Virginia:** Rita Montrosse, 402 Oakvale Rd, Princeton WV 24740. • ritamontrosse@yahoo.com 1-304-425-6140 ~

MEMBER NEWS



Christopher Wynn, Richmond VA. "The widely available magazine "Watercolor Artist" will highlight Christopher as a featured artist in it's upcoming October issue, (available in bookstores in September). The piece is entitled "Escape Artist" and describes his travels circumventing the globe to paint watercolors. He recently was accepted as a Signature Member into the Missouri Watercolor Association. ★

Also, Christopher was chosen to be included in the forthcoming hardbound book, "The Best of the Best" by Kennedy Publishing, a source book for "art collectors, art galleries, and embassies" featuring 100 or so American artists. ~

Thank you!

Much appreciation to **Victoria Lynne** for volunteering to be our state representative for **Tennessee**. Victoria has been with SW for many years and knows our society well.



Belated CONGRATULATIONS

to new Southern Watercolor Society Lifetime Member

Soon Young Warren

Ft. Worth, Texas
April 16, 2011

This status is given to Artist class members who have exhibited in 10 or more SW juried competitions. A Life Member pays no dues. ~

Much appreciation to all our SW members who have chosen to receive our newsletter "electronically" through email. ~

MEMBER NEWS

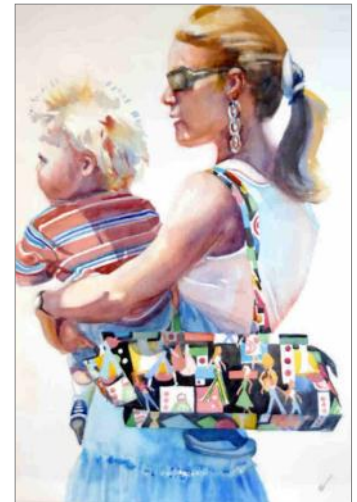


Jan Ledbetter, Williamsburg VA. One of her paintings from the *Maya of Chichicastenango* series (left) has been juried into the prestigious International San Diego Watercolor Society Exhibition 2011 where it received the Signature Member Award. She was also invited to receive Signature Member Status in the organization.

Jan also holds Signature Memberships in the National Watercolor Society, Southern Watercolor Society, Watercolor Art Society of Houston, Baltimore Watercolor Society, and Virginia Watercolor Society.

Jan will be giving her **6th Cultural Tour of Guatemala** in the spring of 2012 with an optional pre-trip add-on to the Maya ruins of Copan, Honduras..... See www.janledbetter.com for details. ~

Jan Ross, Kennesaw AL, received her 'Signature Membership' with the Watercolor Society of Alabama. Her work was recently featured at the Cobb County Chamber of Commerce, Marietta, GA in a "One Woman Show". The Missouri Watercolor Society's Online Gallery is featuring Jan's works this Spring. Her watercolors were included in a Group Invitational Show in Atlanta during August 2011. Additionally, Jan's work has been featured in articles published in the Watercolor Studio Magazine, Direct Magazine, and The Marietta Daily Journal.



'Baggage Claim' by Jan Ross



'Roots' by Bill McKeown

Bill McKeown, Quincy FL. "We went down to the Florida Watercolor Society show in Sarasota for some excitement. I received my Signature Membership and also won the forth place Pathfinder Award. We both had a chance to renew friendship with John and Kathy Salminen. Sara Ruth attended workshops and John's critique of the show. She is now prepared to be an even harder critic! This week I took Best of Show on one piece and First Place on another in the Pelham Wildlife Art and sale in Pelham, GA." ~



Leslie Frontz, Lexington NC, was inducted into the American Watercolor Society as a Signature Member in April 2011. *Beach Buddies* (above), her entry in the 144th AWS Annual Exhibition, was awarded a High Winds Medal and has been on display in the current AWS traveling exhibition.

Leslie was also selected to appear as a featured artist in the December 2011 issue of *Watercolor Artist*. The article about her work includes a step-by-step demonstration and numerous photographs of her artwork.

A painting by Leslie Frontz is part of a Vero Beach Museum of Art exhibition of American watercolor painters on display from October 1, 2011 through January 15, 2012. The invitational exhibit, *In the Tradition of Wyeth: Contemporary Watercolor Masters*, features paintings by American watercolor artists as well as work by Andrew Wyeth from the Museum's permanent collection. ~

Rosemary S. Ferguson, Tallahassee FL, had a September exhibition of her watercolors at the Dare County Arts Council Gallery in her original hometown of Manteo NC.



Betty Jameson, Austin TX, received a Merchandise Award in the Missouri Watercolor Society, National Members' Invitational 2011 at the Boone County Historical Society Gallery in Columbia MO. Betty won a Third Place Award (and the painting sold) and an Honor Award at the Wind River Valley Artists Guild's 62nd Annual National Art Show, Dubois WY. ~

Today, please share this newsletter with a non-member.

To add your news to the SW Website, contact Don Taylor at 850-215-9424 or dltaylor215@gmail.com

Who would think that a watercolor society could become "family". Well, on May 27, 2011 the Southern Watercolor Society became my support system, my "family". On that day, my husband, **Charles** suffered a massive stroke while at his office. In the ER he suffered cardiac arrest, but was revived. He spent 8 weeks in ICU, 12 weeks at the Spain Rehabilitation Center at University of Alabama-Birmingham. We are now in our home-city of Columbus, GA in Muscogee Manor Rehabilitation. At the end of October we will be going home.



Gerri M. Davis
President
2009–2011

During all this time, my friends and fellow artists from Southern Watercolor have been in contact with me sharing encouraging calls, visits, cards, and emails. It meant the world to me. When I felt my lowest, there would be a call or email from a caring SW member to pick me up! I thank you, my family

thanks you. You are more than a society of artists...you are a caring "family".

I especially want to thank **Don Taylor** who never hesitated a moment when I called to tell him about Charles and asked him if he would take over the presidency until I could manage it again. He has done a marvelous job as he always has. The entire **Board** of Southern Watercolor kept us going with their words of encouragement. They are presently doing an incredible job getting our 2012 SW Exhibition into place. It's a lot of responsibility for a few people, so if you would

like to assist with the 2012 Exhibition in any capacity, please contact **Don Taylor** or **Ann Kromhout** and offer your help.

Thank you for your thoughts and prayers, we continue to need them to get through this trying time. And thank you for being FAMILY!
—Artfully yours, Geri M. Davis, SW

Tornadoes and Art

—Don Taylor, Past President

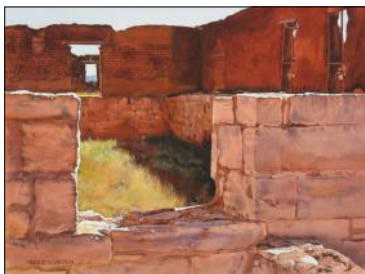
After the tremendous devastation from the tornadoes in the Tuscaloosa, AL area in April, 2011, **SW President Geri Davis** garnered the support of the SW board to find a way to help the art classes in the stricken area schools. With the help of **Jaceena Shepherd**, president of the Watercolor Society of Alabama, the most seriously affected schools were identified, and past president Don Taylor contacted those in need.

After consideration, the Tuscaloosa city school system was selected to receive a cash donation of \$400 to be earmarked

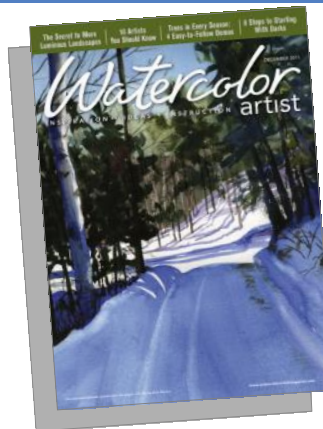
for art classes. These funds were primarily raised from donations from the SW Board and other members.

As always, during times of financial hardship, most art classes find themselves the most likely to have their funding cut, so the SW Board felt this was a very worthy endeavor. The Board would like to thank all those involved in this project and express our heartfelt sympathy for those affected by the tornadoes in the Missouri area as well as Tuscaloosa. ~

MEMBER NEWS



Marion W. Hylton, Gainesville FL. "My watercolor, "Ruins of Ft. Union" (left), has won the Catherine T. Ballantyne Memorial award in the Catherine Lorillard Wolfe Art Club annual show in New York." ~



Kris Parins, Saratoga FL. Her painting "Snowbound" is on the cover of Watercolor Artist Magazine's December 2011 issue. She authored the "Creativity Challenge" article in the same issue. Kris earned Signature Status in Florida Watercolor Society this year. ~



Jean M. Weiner, Le Mars IA. I'm extremely proud of my daughter, Annemarie Weiner, for taking "Grand Champion" in the adult fine art division with her charcoal work of "Conan" at the fair. My painting, "Angie's Eggstravaganza" pulled a Grand Champion in the professional division and Best of Show.



Posing for a daughter/mother photo was priceless! Good times!!

Kathryn Rileigh, Brevard NC, had a watermedia/collage painting from her book series accepted into the 2011 annual show of the National Collage Society. The painting, "Ledger #57" (right), being her third acceptance, brings Signature Membership status. ~



SHOW ENTRIES

Confused?

Normally SW **dues** are to be paid on January 1st of each year, but there is an exception. To enter into an SW exhibition, artists must be **SW members** for the **year** of the **exhibition opening date**. If the show entry deadline is, for example, Dec 1 of 2019, but the show actually opens in 2020, dues must be paid for 2020 **before mailing** the entry form on Dec 1, 2019. If you have questions, call the exhibition chair or the membership chair listed on the SW prospectus for that year. ~

Shipping Boxes

Airfloat Systems, Inc. gives members of the Southern Watercolor Society a 20% discount on purchases of their **Strongbox** for shipping paintings. Please mention the following code when ordering your box online: SWCS ~

Read and Read Again!

Southern Watercolor Society is here for our artists, to promote our artists, and "to elevate the stature of watercolor and educate the public to the significance of watercolor as an important creative permanent painting medium."

This past exhibition, SW found it necessary to return several paintings because they did not conform to specifications listed in the prospectus. Rejecting a shipped painting is something that no watercolor society wants to do, and it certainly is upsetting and expensive for the artist to have a painting turned away.

Please remember it is important to carefully and thoroughly read every prospectus you receive. Each watercolor society has its own "rules" concerning size of the painting, the style of frame, the accepted medium, and even the type of paper used. After a second or third reading of the prospectus, if you still have doubts, please email or phone the exhibition chair or a member of the SW Board. We'll be quite happy to answer your questions. ~

The same painting twice?

Our SW prospectus states that: "Any painting **previously** accepted into an SW show is ineligible." We hope that artists entering our exhibitions will be cognizant of their entry's validity. We rely on the entrants recollection and honesty, as to whether their entry has previously been selected into an SW Exhibition. Thank you. ~

**No feathers, rocks or sand!**

Instructions in our SW exhibition prospectus specify that eligible artwork is limited to water-soluble media

and that a **collage** is acceptable only if it is on paper painted by the artist in **water media** in an **aqueous manner**. A painting that does not meet this criteria will not be accepted into the exhibition and will be returned to the artist. ~

Color prints 4x6 inches? Yes!

There are times when an exhibition chairperson must know what an accepted painting looks like when no computer image is available...like when the boxes of show paintings are delivered to the gallery. Receiving more than 250 entry images can be a daunting process if the photo papers differ in size.

Please print your image as large as possible within the 4x6" sheet of photo paper **without cropping the image**—one painting per sheet, either vertical or horizontal. ~

Southern Watercolor's **35th Prospectus** for the 2012 Exhibition will be mailed in mid-January.

MEMBER NEWS



McCracken's 'Delta Sky'

Laurin McCracken, Leland MS. "I had a one-man show during September in the Lincoln County Library, Brookhaven, MS that was sponsored by the Fine Arts Committee of the Brookhaven Trust.

"My paintings have been recognized with the following Awards; Dr. Donald and Helen Budd Burness Memorial Award - the Adirondacks National Exhibition of American Watercolors, Old Forge, NY, for "Delta Sky". Second Prize - Keystone National 2011: Juried Exhibition of Works on Paper, Art Center School and Galleries, Mechanicsburg, PA, for "Yellow Pears on Foil."

"I have an article in the October/November issue of International Artist magazine, starting on page 82, "Seeing, Drawing and Mastery of

the Craft." In the November issue of the Artist's magazine, I wrote the Drawing Board column on page 66, "Build' a Better Building." It is the second of two articles I have written for the magazine about using perspective and painting buildings. I am also included in the article "Tools that are tried-and-true" on page 58." ~



McCracken's 'Yellow Pears on Foil.'

WELCOME NEW MEMBERS

Susana Cremin
Stuart, FL

Melissa English
Hockley, TX

www.melissaenglishartist.com

Laurel Lake McGuire
Mandeville, LA

Barbara Powell
Key West, FL
www.barbarapowell.net

Rema White
Jane Lew, WV

~

Southern Watercolor Society uses the 2-letter acronym of **SW** for rapid identification, not SWS.

Frederick C. Graff Workshop – The Creative Process of Watercolor

Southern Watercolor Society–June 11-15, 2012

\$ 470.00 for SW 2012 Member.

Non-members please submit your SW dues before registering for this workshop.

\$ 200.00 deposit is required with this registration form.

Deadline for Registration May 1, 2012.

Balance due on/before June 11, 2012.

Cancellation prior to March 31, 2012 will receive a full refund less \$30 handling fee.

Deposit non-refundable after April 1, 2012.

Please make a personal copy of your completed registration form before mailing.

Print NAME _____

My current membership status is: Associate Active___ Artist SW___ LM

ADDRESS _____

CITY _____ ST _____ ZIP _____

PHONE _____

EMAIL _____

Make check payable to Southern Watercolor Society.

ENCLOSED:

\$ 200.00 Deposit

Check # _____

MAIL TO:

SW Workshop Registrar
Jim Thomas
SNCA/SW Gallery Workshop
P.O. Box 460
Sautee, GA 30571
706-878-3300
jthomas@snca.org



'THE CREATIVE PROCESS OF WATERCOLOR'

FREDERICK C. GRAFF

AWS, NWS, TWSA (Master Status)



This energetic, five-day workshop is specifically designed for intermediate and advanced level watercolor students. In order to become familiar with everyone's personal style and direction of painting, Fred will begin the workshop by reviewing a painting from each participating student.

Compositional theories and thoughts will be emphasized with numerous painting assignments, exercises, demonstrations, open discussions, PowerPoint presentation, lectures and one-on-one instruction. Fred feels it is essential that students go beyond the level of just recording facts, and therefore major emphasis will be placed on how to successfully develop a painting through a harmonious blend of different traditional and innovative approaches to watercolor. ~



ART TOUR

JAN LEDBETTER

March 29 – April 8, 2012
You are invited to join JAN on A CULTURAL TOUR and ARTIST'S WORKSHOP of **GUATEMALA**, with an optional add-on to the Maya ruins of Copan, Honduras, March 27 – 29. A place of extraordinary natural beauty where the Maya dress and live much as they did centuries ago. Painting, photographic, and sight-seeing opportunities abound in the most picturesque places in Guatemala. Stay at some of the country's most elegant hotels, and explore the renowned Maya market of Chichicastenango. For full details, visit:

www.janledbetter.com or www.exploreguatemala.com

~

WORKSHOPS



LIAN ZHEN

February 24-27, 2012
Visual Arts Center of Northwest Florida
Panama City, FL

Lian will be teaching two days watercolor and two days Chinese painting.
Cost: Members \$340.00
Non-members \$390.00
Contact: Helen Ballance
artdrama4life@yahoo.com
Telephone: 850-541-3867 ~

LESLIE FRONTZ Workshop
Nov 7–10, 2011 **Dallas, TX**
(336) 357-5974
hfrontz@excominc.net ~

Detailed listings of workshops being taught by members can be found on the SW website. To be listed contact Don Taylor dltaylor215@gmail.com 1-850 215-9424

CALL FOR ENTRIES

Deadline: Nov 18, 2011

We're pleased to announce a Call for Entries for our 3rd annual **Signature American Watercolor Exhibition**. Open only to artists who hold Signature Level Memberships in U.S. societies, the 2012 show will be presented with the travel exhibitions of BOTH the NWS & AWS. Fallbrook Art Center, Fallbrook CA, is extremely proud to be the only venue in the country to host both travel shows at the same time. Juror: Ted Nuttall, AWS, NWS. Awards: \$4,500 in cash and merchandise awards including the Helen J. Sherry-McGee Memorial Award of \$500 for "a watermedia abstract or experimental work".
www.fallbrookartcenter.org

~

Deadline: Nov 15, 2011

Watercolor Society of Alabama **Online Competition and Exhibition 2011**. For the prospectus, the instructions and the entry form for sending by e-mail and for the instructions and entry form for sending by regular mail; www.WSAlabama.org Other articles which may be of interest will be posted from time to time. So check out the INFORMATION page frequently. ~

You can view this newsletter in full color on the SW web site:
www.southernwatercolorssociety.org

Click on [Newsletter], then click on [Download Current Newsletter]. **Adobe Reader** is needed to view the SW newsletter. Download it free from: www.adobe.com/products/acrobat/readstep2.html

Southern Watercolor Society

319 Westbrook Dr
Carrboro NC 27510

October 2011



Our 35th Annual Juried Exhibition
and Workshop will be held in
northeast Georgia at the
Santee Nacoochee Center.



Exhibition Opening June 9–10, 2012
Fred Graff Workshop June 11–15, 2012

www.southernwatercolorssociety.org

Please keep your email address current and send membership information to:

Linda Pelc • 4330 Camden Rd • Tallahassee FL 32303 Email: lindapelc@yahoo.com

1. Dues shall be paid annually on or before **January 1** of each year and become delinquent as of **March 1** of each year.
 2. Nonpayment of dues within the calendar year terminates the membership and Active or Artist Signature status.
 3. To reinstate Active or Artist Signature membership, a member must fulfill membership requirements again, or a member may be reinstated by payment of the current year dues and any of the three past years dues that are unpaid.
- BY-LAWS** are on the SW web site and can be downloaded from there: www.southernwatercolorssociety.org/Bylaws.html



Southern Watercolor Society

2012 MEMBERSHIP—\$30

MEMBER STATES

Date _____ Renewal New Change Information

Name ^{Mr} _____
_{Ms} _____

Address _____

City _____ State _____ Zip _____

Telephone _____

Email _____

The SW Newsletter will be sent to you by EMAIL unless US Mail is preferred.

Check here to request a printed copy of the SW Newsletter by U.S. Mail.

My Web Site _____

I volunteer for SW in the area of:

Do NOT include my name and address on lists to our award donors or other contributors.

Please fill in this form, make your check payable to **Southern Watercolor Society** and mail both to:

SW Membership

Linda Pelc
4330 Camden Rd
Tallahassee FL 32303

- Alabama
- Arkansas
- Delaware
- District of Columbia
- Florida
- Georgia
- Kansas
- Kentucky
- Louisiana
- Maryland
- Mississippi
- Missouri
- North Carolina
- Oklahoma
- South Carolina
- Tennessee
- Texas
- Virginia
- West Virginia